

Hyatt Regency La Jolla at Aventine

ADDRESS 3777 La Jolla Village Drive, San Diego, CA 92122, USA

PHONE 858-552-1234 FAX 858-552-6066

WEB www.lajolla.hyatt.com



ACCOMMODATION

- 419 guestrooms, including 24 suites/parlors, 225 kings, 175 double/doubles, 33 Hyatt Business Plan®, 419 Hyatt Gold Passport®, 46 Regency Club®, 11 accessible rooms, and 385 non-smoking rooms; All accommodations offer:
- TV with remote control, cable movie channels, in-room pay movies
- Voice mail, two-line speaker and conference call telephones with computer dataports
- Video messages, video account review, video check-out
- Daily newspaper for all guests
- Individual climate control
- Electronic door locks
- Full bath amenities
- Turndown available on request
- Iron, ironing boards
- AM/FM alarm clock
- Hair dryer
- Bathrobes for Regency Club®
- Guestroom wireless Internet

SERVICES & FACILITIES

- Business Center
- 1-800-CHECK-IN®
- Concierge
- Assistive devices for persons with disabilities
- Gift shop, nearby florist, hair and manicure salon
- Laundry/dry cleaning
- 24-hour room service
- Valet parking
- Valet service
- Covered parking
- Multilingual staff
- Secretarial support services
- Currency exchange
- Safe-deposit boxes at front desk
- Ice machines

RESTAURANTS & BARS

- Barcino Grill — California cuisine
- Cafe Japengo — Sushi/Pacific Rim cuisine
- Fleming's Prime Steakhouse — Steakhouse
- Michael's Lounge — Lounge
- 808 — Seafood
- Sofia's Italian Table — Italian cuisine

CONFERENCES & BANQUETS

- A total of 32,000 square feet of function space including 10,846 square feet of prefunction space, the 11,800 square foot Aventine Ballroom, 5,850 square foot, state-of-the-art, glass-enclosed Pavilion is adjacent to a lavishly landscaped garden area. The Pavilion can accommodate up to 500 guests for meetings, receptions and banquets
- 21 meeting rooms each with individual or master controls for heat/AC, sound, music, telephones, multiple electrical/microphone outlets, special lighting effects, 110V/220V single-phase electricity; 3-phase electricity also available
- Regency Caterers® provides both on-site and off-site catering. Experienced consultants can help in site selection and expert advice in planning weddings, trade shows, receptions and business meetings
- Adjacent Restaurant Village, offers 4 internationally themed restaurants: Cafe Japengo with award-winning sushi and pacific rim cuisine for 7 consecutive years; Flemings, featuring a steakhouse and wines flair; Sofia's Italian Table, serving the finest northern Italian fare, and 808 Restaurant featuring a Euro-Hawaiian flair.

RECREATIONAL FACILITIES

- Olympic-size heated outdoor lap pool with individual cabanas, remodeled pool bar area
- Outdoor whirlpool and sundeck
- Attached to The Sporting Club One, a 32,000 sq.-ft. deluxe fitness spa, rated among the top 10 versus top 20 in the U.S. by "Self" magazine. Facility includes free weights, exercise cycles, steppers, stair climbers, rowers, Nautilus®, Cybex®, Nordic Track®, personal trainers, full-size basketball court, swimming, Jacuzzi®, steam room, aerobics, spinning classes, juice bar, and deluxe dressing rooms
- 2 miles, 36-hole Torrey Pines municipal golf course; 7 miles, 18-hole Meadows Del Mar golf course

POINTS OF INTEREST

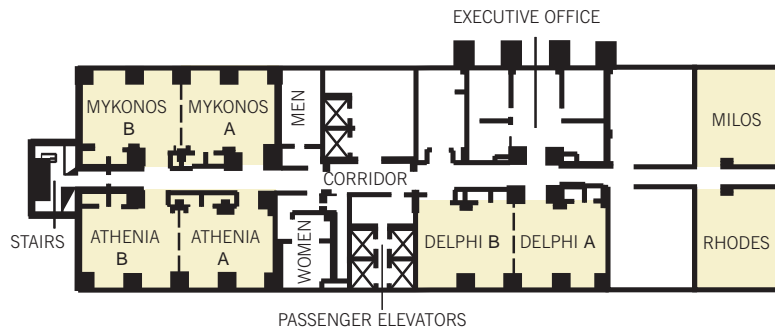
- San Diego Zoo and Wild Animal Park
- Sea World®
- Beaches
- La Jolla shopping
- Parks
- Museums
- La Jolla Playhouse and Del Mar Race Track



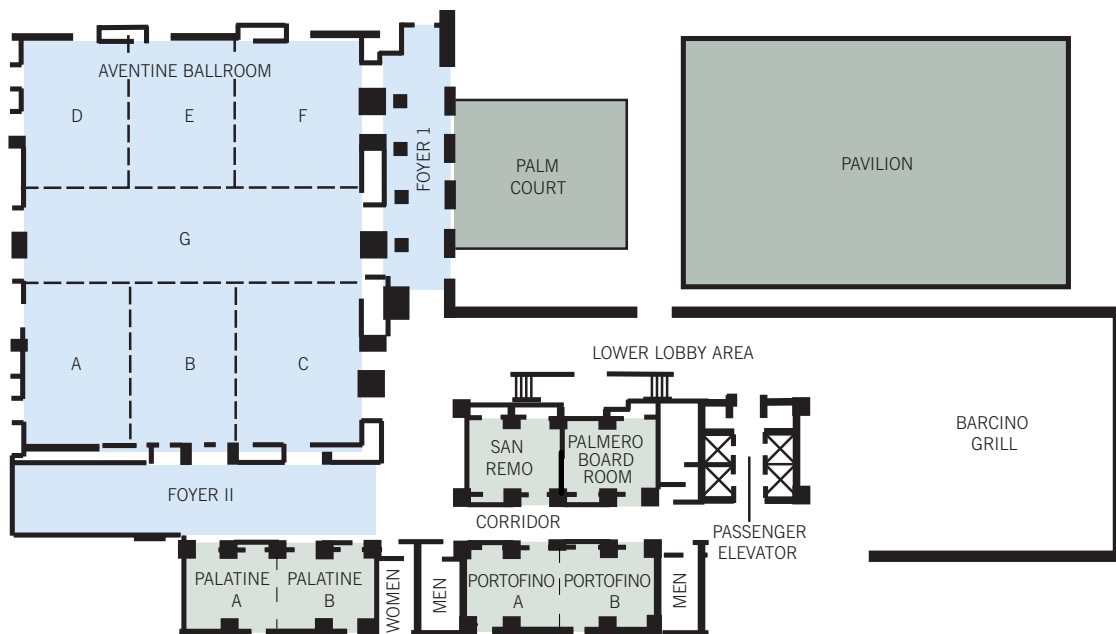
Hyatt Regency La Jolla at Aventine

DIRECTIONS

From San Diego Int'l Airport (10 miles): Turn left on Harbor Drive, then left again on Laurel. Follow signs to I-5 North. Exit at La Jolla Village Drive and turn right. Turn right again at Lebon. Turn right on UniversityCenter Lane.



SECOND FLOOR CONFERENCE LEVEL



BALLROOM LEVEL